



# Certificate of Analysis

**FINAL**

Powered by Confident Cannabis  
1 of 4

## Venom Extracts

9014 N 23rd Ave Suite 10  
Phoenix, AZ 85021  
jake@venomextracts.com  
(602) 405-6446  
Lic. #

Sample: 2008C4L0077.7764

Strain: Karma Collision

Lot#: ; Batch#: ; Batch Size: - grams  
Sample Received: 08/13/2020; Report Created: 08/19/2020; Expires: 08/19/2021

## Karma Collision Sugar/Crystals

Concentrates & Extracts, Sugar Wax, Propane



## Cannabinoids

## Safety

**63.071%**

Total THC

**<LOQ**

Total CBD

**Not Tested**

Microbials

**NT**

Moisture

**Complete**

Solvents

## Terpenes



**Cinnamon**  
β-Caryophyllene



**Hops**  
α-Humulene



**Lavender**  
Linalool



**Orange**  
δ-Limonene



**Earthy**  
Ocimene



7650 E. Evans Road  
Scottsdale, AZ  
(480) 219-6460  
<http://www.c4lab.com>  
Lic#

Dennis Wells  
CSO/QAM



Scan for  
References

Confident Cannabis  
All Rights Reserved  
[support@confidentcannabis.com](mailto:support@confidentcannabis.com)  
(866) 506-5866  
[www.confidentcannabis.com](http://www.confidentcannabis.com)



This product has been tested by C4 Laboratories LLC using valid testing methodologies and a quality system as required by state law. Values reported relate only to the product tested. C4 Laboratories LLC makes no claims as to the efficacy, safety or other risks associated with any detected or non-detected levels of any compounds reported herein. This Certificate shall not be reproduced except in full, without the written approval of C4 Laboratories LLC.



# Certificate of Analysis

Powered by Confident Cannabis  
2 of 4

**FINAL**

## Venom Extracts

9014 N 23rd Ave Suite 10  
Phoenix, AZ 85021  
jake@venomextracts.com  
(602) 405-6446  
Lic. #

Sample: 2008C4L0077.7764

Strain: Karma Collision

Lot#: ; Batch#: ; Batch Size: - grams  
Sample Received: 08/13/2020; Report Created: 08/19/2020; Expires: 08/19/2021

## Karma Collision Sugar/Crystals

Concentrates & Extracts, Sugar Wax, Propane



**63.071%**  
Total THC

**<LOQ**  
Total CBD

**1** : **0**  
THC : CBD

## Cannabinoids

**NT**  
Moisture

Analyte	LOQ	Mass	Mass	Std. Dev.
	%	%	mg/g	
THCa	0.562	56.693	566.93	
Δ9-THC	0.562	13.351	133.51	
CBD	0.562	ND	ND	
CBDa	0.562	<LOQ	<LOQ	
CBC	0.562	<LOQ	<LOQ	
CBG	0.562	<LOQ	<LOQ	
CBN	0.562	ND	ND	
THCV	0.562	ND	ND	
Δ8-THC	0.562	ND	ND	
CBDV	0.562	ND	ND	
<b>Total</b>		<b>70.044</b>	<b>700.44</b>	

1 Unit =

Notes: Chromatograms available upon request.

Total THC = THCa \* 0.877 + d9-THC

Total CBD = CBDa \* 0.877 + CBD

LOQ = Limit of Quantitation; NR = Not Reported; ND = Not Detected. Unless otherwise stated all quality control samples performed within specifications established by the Laboratory.



7650 E. Evans Road  
Scottsdale, AZ  
(480) 219-6460  
http://www.c4lab.com  
Lic#

Dennis Wells  
CSO/QAM



Scan for  
References

Confident Cannabis  
All Rights Reserved  
support@confidentcannabis.com  
(866) 506-5866  
www.confidentcannabis.com



This product has been tested by C4 Laboratories LLC using valid testing methodologies and a quality system as required by state law. Values reported relate only to the product tested. C4 Laboratories LLC makes no claims as to the efficacy, safety or other risks associated with any detected or non-detected levels of any compounds reported herein. This Certificate shall not be reproduced except in full, without the written approval of C4 Laboratories LLC.



# Certificate of Analysis

Powered by Confident Cannabis  
3 of 4

**FINAL**

## Venom Extracts

9014 N 23rd Ave Suite 10  
Phoenix, AZ 85021  
jake@venomextracts.com  
(602) 405-6446  
Lic. #

Sample: 2008C4L0077.7764

Strain: Karma Collision

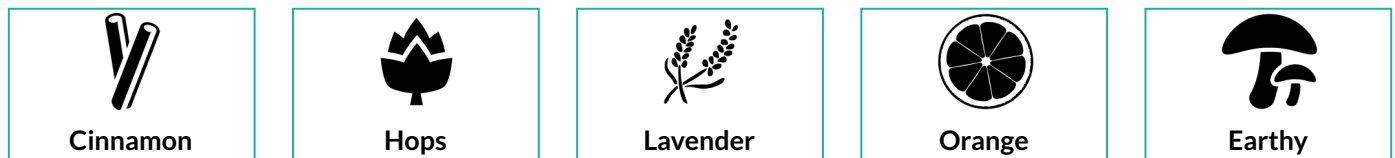
Lot#: ; Batch#: ; Batch Size: - grams  
Sample Received: 08/13/2020; Report Created: 08/19/2020; Expires: 08/19/2021

## Karma Collision Sugar/Crystals

Concentrates & Extracts, Sugar Wax, Propane



## Terpenes



Analyte	LOQ	Mass	Mass	
	%	%	mg/g	
β-Caryophyllene	0.079	1.484	14.84	
α-Humulene	0.079	0.410	4.10	
Linalool	0.079	0.390	3.90	
δ-Limonene	0.079	0.178	1.78	
Ocimene	0.079	0.125	1.25	
β-Myrcene	0.079	0.113	1.13	
p-Cymene	0.079	0.106	1.06	
γ-Terpinene	0.079	0.099	0.99	
α-Terpinene	0.079	0.091	0.91	
α-Pinene	0.079	<LOQ	<LOQ	
β-Pinene	0.079	<LOQ	<LOQ	
Camphene	0.079	<LOQ	<LOQ	
Caryophyllene Oxide	0.079	ND	ND	
δ-3-Carene	0.079	<LOQ	<LOQ	
Eucalyptol	0.079	ND	ND	
Geraniol	0.079	ND	ND	
Guaiol	0.079	ND	ND	
Nerolidol	0.079	ND	ND	
(-)-α-Bisabolol	0.079	ND	ND	
(-)-Isopulegol	0.079	ND	ND	
Terpinolene	0.079	<LOQ	<LOQ	

**2.996%**  
Total Terpenes

Notes: Chromatograms available upon request.  
LOQ = Limit of Quantitation; NR = Not Reported; ND = Not Detected. Unless otherwise stated all quality control samples performed within specifications established by the Laboratory.



7650 E. Evans Road  
Scottsdale, AZ  
(480) 219-6460  
http://www.c4lab.com  
Lic#

Dennis Wells  
CSO/QAM



Confident Cannabis  
All Rights Reserved  
support@confidentcannabis.com  
(866) 506-5866  
www.confidentcannabis.com



This product has been tested by C4 Laboratories LLC using valid testing methodologies and a quality system as required by state law. Values reported relate only to the product tested. C4 Laboratories LLC makes no claims as to the efficacy, safety or other risks associated with any detected or non-detected levels of any compounds reported herein. This Certificate shall not be reproduced except in full, without the written approval of C4 Laboratories LLC.



# Certificate of Analysis

Powered by Confident Cannabis  
4 of 4

**FINAL**

## Venom Extracts

9014 N 23rd Ave Suite 10  
Phoenix, AZ 85021  
jake@venomextracts.com  
(602) 405-6446  
Lic. #

Sample: 2008C4L0077.7764

Strain: Karma Collision

Lot#: ; Batch#: ; Batch Size: - grams  
Sample Received: 08/13/2020; Report Created: 08/19/2020; Expires: 08/19/2021

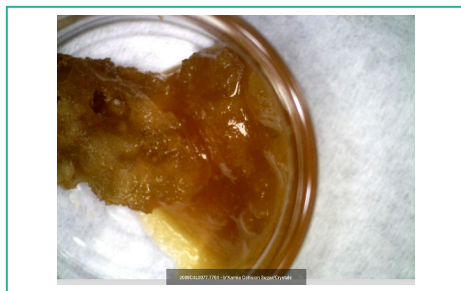
## Karma Collision Sugar/Crystals

Concentrates & Extracts, Sugar Wax, Propane



## Residual Solvents

Analyte	LOQ	Limit	Mass	Status
	PPM	PPM	PPM	
Acetone	42		67	Tested
Acetonitrile	42		ND	Tested
Benzene	42		ND	Tested
Carbon-Tetrachloride	42		ND	Tested
Chloroform	42		ND	Tested
Ethanol	42		<LOQ	Tested
Heptane	42		ND	Tested
Hexanes	42		ND	Tested
Isobutane	42		ND	Tested
Isopropanol	42		<LOQ	Tested
Methanol	42		ND	Tested
n-Butane	42		<LOQ	Tested
o-Xylene	42		ND	Tested
Pentane	42		ND	Tested
Tetrahydrofuran	42		ND	Tested
Toluene	42		ND	Tested
Xylenes	42		ND	Tested



Notes: Chromatograms available upon request.

LOQ = Limit of Quantitation; ND = Not Detected; Unless otherwise stated all quality control samples performed within specifications established by the Laboratory.



7650 E. Evans Road  
Scottsdale, AZ  
(480) 219-6460  
<http://www.c4lab.com>  
Lic#

Dennis Wells  
CSO/QAM



Scan for  
References

Confident Cannabis  
All Rights Reserved  
support@confidentcannabis.com  
(866) 506-5866  
[www.confidentcannabis.com](http://www.confidentcannabis.com)



This product has been tested by C4 Laboratories LLC using valid testing methodologies and a quality system as required by state law. Values reported relate only to the product tested. C4 Laboratories LLC makes no claims as to the efficacy, safety or other risks associated with any detected or non-detected levels of any compounds reported herein. This Certificate shall not be reproduced except in full, without the written approval of C4 Laboratories LLC.