



# Certificate of Analysis

**FINAL**

Powered by Confident Cannabis  
1 of 4

## Venom Extracts

9014 N 23rd Ave Suite 10  
Phoenix, AZ 85021  
jake@venomextracts.com  
(602) 405-6446  
Lic. #0259910DARS639141001

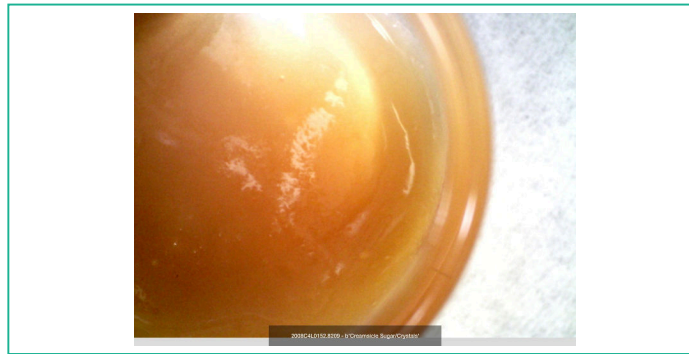
Sample: 2008C4L0152.8209

Strain: Creamsicle

Lot#: ; Batch#: ; Batch Size: - grams  
Sample Received: 08/25/2020; Report Created: 08/28/2020; Expires: 08/28/2021

## Creamsicle Sugar/Crystals

Concentrates & Extracts, Sugar Wax, Propane



## Cannabinoids

## Safety

**73.165%**

Total THC

**<LOQ**

Total CBD

**Not Tested**

Microbials

**NT**

Moisture

**Complete**

Solvents

## Terpenes



**Cinnamon**  
β-Caryophyllene



**Lavender**  
Linalool



**Hops**  
α-Humulene



**Orange**  
δ-Limonene



**Wood**  
Caryophyllene Oxide



7650 E. Evans Road  
Scottsdale, AZ  
(480) 219-6460  
<http://www.c4lab.com>  
Lic#

Dennis Wells  
CSO/QAM



Scan for  
References

Confident Cannabis  
All Rights Reserved  
[support@confidentcannabis.com](mailto:support@confidentcannabis.com)  
(866) 506-5866  
[www.confidentcannabis.com](http://www.confidentcannabis.com)



This product has been tested by C4 Laboratories LLC using valid testing methodologies and a quality system as required by state law. Values reported relate only to the product tested. C4 Laboratories LLC makes no claims as to the efficacy, safety or other risks associated with any detected or non-detected levels of any compounds reported herein. This Certificate shall not be reproduced except in full, without the written approval of C4 Laboratories LLC.



# Certificate of Analysis

FINAL

Powered by Confident Cannabis  
2 of 4

## Venom Extracts

9014 N 23rd Ave Suite 10  
Phoenix, AZ 85021  
jake@venomextracts.com  
(602) 405-6446  
Lic. #0259910DARS639141001

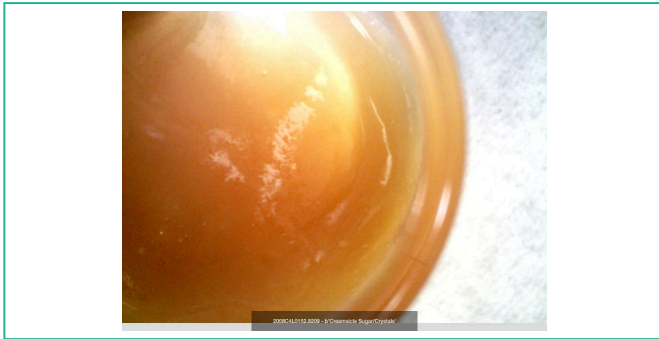
Sample: 2008C4L0152.8209

Strain: Creamsicle

Lot#: ; Batch#: ; Batch Size: - grams  
Sample Received: 08/25/2020; Report Created: 08/28/2020; Expires: 08/28/2021

## Creamsicle Sugar/Crystals

Concentrates & Extracts, Sugar Wax, Propane



73.165%

Total THC

<LOQ

Total CBD

1

THC

0

CBD

## Cannabinoids

NT

Moisture

| Analyte         | LOQ   | Mass          | Mass          | Std. Dev. |
|-----------------|-------|---------------|---------------|-----------|
|                 | %     | %             | mg/g          |           |
| THCa            | 0.545 | 68.507        | 685.07        |           |
| $\Delta^9$ -THC | 0.545 | 13.084        | 130.84        |           |
| CBD             | 0.545 | ND            | ND            |           |
| CBDa            | 0.545 | <LOQ          | <LOQ          |           |
| CBC             | 0.545 | <LOQ          | <LOQ          |           |
| CBG             | 0.545 | <LOQ          | <LOQ          |           |
| CBN             | 0.545 | ND            | ND            |           |
| THCV            | 0.545 | <LOQ          | <LOQ          |           |
| $\Delta^8$ -THC | 0.545 | ND            | ND            |           |
| CBDV            | 0.545 | ND            | ND            |           |
| <b>Total</b>    |       | <b>81.591</b> | <b>815.91</b> |           |

1 Unit =

Notes: Chromatograms available upon request.

Total THC = THCa \* 0.877 +  $\Delta^9$ -THC

Total CBD = CBDa \* 0.877 + CBD

LOQ = Limit of Quantitation; NR = Not Reported; ND = Not Detected. Unless otherwise stated all quality control samples performed within specifications established by the Laboratory.



7650 E. Evans Road  
Scottsdale, AZ  
(480) 219-6460  
http://www.c4lab.com  
Lic#

Dennis Wells  
CSO/QAM



Confident Cannabis  
All Rights Reserved  
support@confidentcannabis.com  
(866) 506-5866  
www.confidentcannabis.com



This product has been tested by C4 Laboratories LLC using valid testing methodologies and a quality system as required by state law. Values reported relate only to the product tested. C4 Laboratories LLC makes no claims as to the efficacy, safety or other risks associated with any detected or non-detected levels of any compounds reported herein. This Certificate shall not be reproduced except in full, without the written approval of C4 Laboratories LLC.



# Certificate of Analysis

Powered by Confident Cannabis  
3 of 4

**FINAL**

## Venom Extracts

9014 N 23rd Ave Suite 10  
Phoenix, AZ 85021  
jake@venomextracts.com  
(602) 405-6446  
Lic. #0259910DARS639141001

Sample: 2008C4L0152.8209

Strain: Creamsicle

Lot#: ; Batch#: ; Batch Size: - grams  
Sample Received: 08/25/2020; Report Created: 08/28/2020; Expires: 08/28/2021

## Creamsicle Sugar/Crystals

Concentrates & Extracts, Sugar Wax, Propane



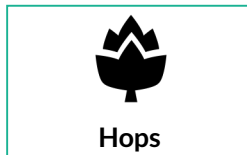
## Terpenes



Cinnamon



Lavender



Hops



Orange



Wood

| Analyte             | LOQ   | Mass  | Mass  |  |
|---------------------|-------|-------|-------|--|
|                     | %     | %     | mg/g  |  |
| β-Caryophyllene     | 0.076 | 1.243 | 12.43 |  |
| Linalool            | 0.076 | 0.380 | 3.80  |  |
| α-Humulene          | 0.076 | 0.371 | 3.71  |  |
| δ-Limonene          | 0.076 | 0.274 | 2.74  |  |
| Caryophyllene Oxide | 0.076 | 0.230 | 2.30  |  |
| β-Myrcene           | 0.076 | 0.172 | 1.72  |  |
| Ocimene             | 0.076 | 0.168 | 1.68  |  |
| Terpinolene         | 0.076 | 0.142 | 1.42  |  |
| α-Pinene            | 0.076 | 0.119 | 1.19  |  |
| β-Pinene            | 0.076 | 0.119 | 1.19  |  |
| p-Cymene            | 0.076 | 0.110 | 1.10  |  |
| γ-Terpinene         | 0.076 | 0.095 | 0.95  |  |
| α-Terpinene         | 0.076 | 0.089 | 0.89  |  |
| Camphene            | 0.076 | <LOQ  | <LOQ  |  |
| δ-3-Carene          | 0.076 | <LOQ  | <LOQ  |  |
| Eucalyptol          | 0.076 | <LOQ  | <LOQ  |  |
| Geraniol            | 0.076 | ND    | ND    |  |
| Guaiol              | 0.076 | ND    | ND    |  |
| Nerolidol           | 0.076 | <LOQ  | <LOQ  |  |
| (-)-α-Bisabolol     | 0.076 | ND    | ND    |  |
| (-)-Isopulegol      | 0.076 | ND    | ND    |  |

**3.512%**  
Total Terpenes

Notes: Chromatograms available upon request.

LOQ = Limit of Quantitation; NR = Not Reported; ND = Not Detected. Unless otherwise stated all quality control samples performed within specifications established by the Laboratory.



7650 E. Evans Road  
Scottsdale, AZ  
(480) 219-6460  
http://www.c4lab.com  
Lic#

Dennis Wells  
CSO/QAM



Scan for  
References

Confident Cannabis  
All Rights Reserved  
support@confidentcannabis.com  
(866) 506-5866  
www.confidentcannabis.com



This product has been tested by C4 Laboratories LLC using valid testing methodologies and a quality system as required by state law. Values reported relate only to the product tested. C4 Laboratories LLC makes no claims as to the efficacy, safety or other risks associated with any detected or non-detected levels of any compounds reported herein. This Certificate shall not be reproduced except in full, without the written approval of C4 Laboratories LLC.



# Certificate of Analysis

Powered by Confident Cannabis  
4 of 4

**FINAL**

## Venom Extracts

9014 N 23rd Ave Suite 10  
Phoenix, AZ 85021  
jake@venomextracts.com  
(602) 405-6446  
Lic. #0259910DARS639141001

Sample: 2008C4L0152.8209

Strain: Creamsicle

Lot#: ; Batch#: ; Batch Size: - grams  
Sample Received: 08/25/2020; Report Created: 08/28/2020; Expires: 08/28/2021

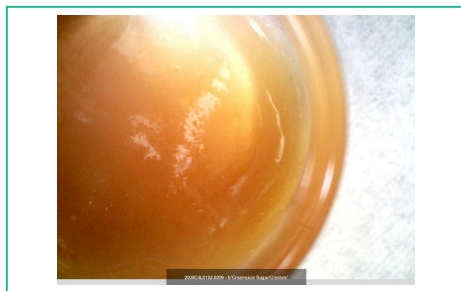
## Creamsicle Sugar/Crystals

Concentrates & Extracts, Sugar Wax, Propane



## Residual Solvents

| Analyte              | LOQ<br>PPM | Limit<br>PPM | Mass<br>PPM | Status |
|----------------------|------------|--------------|-------------|--------|
| Acetone              | 46         |              | <LOQ        | Tested |
| Acetonitrile         | 46         |              | ND          | Tested |
| Benzene              | 46         |              | ND          | Tested |
| Carbon-Tetrachloride | 46         |              | ND          | Tested |
| Chloroform           | 46         |              | ND          | Tested |
| Ethanol              | 46         |              | ND          | Tested |
| Heptane              | 46         |              | ND          | Tested |
| Hexanes              | 46         |              | ND          | Tested |
| Isobutane            | 46         |              | ND          | Tested |
| Isopropanol          | 46         |              | ND          | Tested |
| Methanol             | 46         |              | ND          | Tested |
| n-Butane             | 46         |              | <LOQ        | Tested |
| o-Xylene             | 46         |              | ND          | Tested |
| Pentane              | 46         |              | ND          | Tested |
| Tetrahydrofuran      | 46         |              | ND          | Tested |
| Toluene              | 46         |              | ND          | Tested |
| Xylenes              | 46         |              | ND          | Tested |



Notes: Chromatograms available upon request.

LOQ = Limit of Quantitation; ND = Not Detected; Unless otherwise stated all quality control samples performed within specifications established by the Laboratory.



7650 E. Evans Road  
Scottsdale, AZ  
(480) 219-6460  
<http://www.c4lab.com>  
Lic#

Dennis Wells  
CSO/QAM



Scan for  
References

Confident Cannabis  
All Rights Reserved  
support@confidentcannabis.com  
(866) 506-5866  
[www.confidentcannabis.com](http://www.confidentcannabis.com)



This product has been tested by C4 Laboratories LLC using valid testing methodologies and a quality system as required by state law. Values reported relate only to the product tested. C4 Laboratories LLC makes no claims as to the efficacy, safety or other risks associated with any detected or non-detected levels of any compounds reported herein. This Certificate shall not be reproduced except in full, without the written approval of C4 Laboratories LLC.