



# Certificate of Analysis

**FINAL**

Powered by Confident Cannabis  
1 of 4

## Venom Extracts

9014 N 23rd Ave Suite 10  
Phoenix, AZ 85021  
jcohen089@gmail.com  
(602) 405-6446  
Lic. #0259910DARS639141001

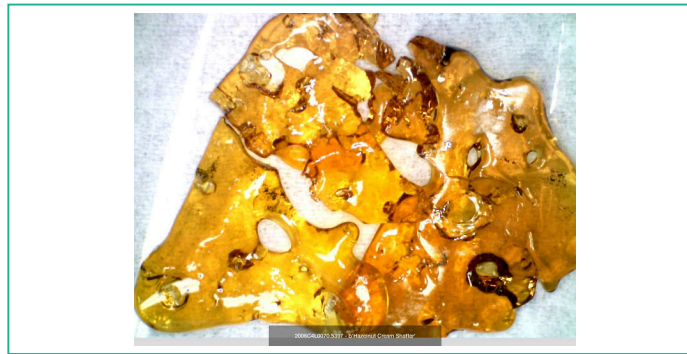
Sample: 2006C4L0070.5397

Strain: Hazelnut Cream

Lot#: ; Batch#: ; Batch Size: - grams  
Sample Received: 06/12/2020; Report Created: 06/17/2020; Expires: 06/17/2021

## Hazelnut Cream Shatter

Concentrates & Extracts, Shatter, Butane



## Cannabinoids

## Safety

**77.888%**

Total THC

**<LOQ**

Total CBD

**Not Tested**

Microbials

**NT**

Moisture

**Complete**

Solvents

## Terpenes



**Cinnamon**  
β-Caryophyllene



**Orange**  
δ-Limonene



**Hops**  
β-Myrcene



**Pine**  
β-Pinene



**Earthy**  
Ocimene



7650 E. Evans Road  
Scottsdale, AZ  
(480) 219-6460  
<http://www.c4lab.com>  
Lic#

Dennis Wells  
CSO/QAM



Scan for  
References

Confident Cannabis  
All Rights Reserved  
[support@confidentcannabis.com](mailto:support@confidentcannabis.com)  
(866) 506-5866  
[www.confidentcannabis.com](http://www.confidentcannabis.com)



This product has been tested by C4 Laboratories LLC using valid testing methodologies and a quality system as required by state law. Values reported relate only to the product tested. C4 Laboratories LLC makes no claims as to the efficacy, safety or other risks associated with any detected or non-detected levels of any compounds reported herein. This Certificate shall not be reproduced except in full, without the written approval of C4 Laboratories LLC.



# Certificate of Analysis

Powered by Confident Cannabis  
2 of 4

**FINAL**

## Venom Extracts

9014 N 23rd Ave Suite 10  
Phoenix, AZ 85021  
jcohen089@gmail.com  
(602) 405-6446  
Lic. #0259910DARS639141001

Sample: 2006C4L0070.5397

Strain: Hazelnut Cream

Lot#: ; Batch#: ; Batch Size: - grams  
Sample Received: 06/12/2020; Report Created: 06/17/2020; Expires: 06/17/2021

## Hazelnut Cream Shatter

Concentrates & Extracts, Shatter, Butane



**77.888%**  
Total THC

**<LOQ**  
Total CBD

**1** : **0**  
THC : CBD

## Cannabinoids

**NT**  
Moisture

Analyte	LOQ	Mass	Mass	Std. Dev.
	%	%	mg/g	
THCa	0.638	85.711	857.11	
Δ9-THC	0.638	2.719	27.19	
CBD	0.638	ND	ND	
CBDa	0.638	ND	ND	
CBC	0.638	ND	ND	
CBG	0.638	<LOQ	<LOQ	
CBN	0.638	ND	ND	
THCV	0.638	ND	ND	
Δ8-THC	0.638	ND	ND	
CBDV	0.638	ND	ND	
<b>Total</b>		<b>88.430</b>	<b>884.30</b>	

1 Unit =

Notes: Chromatograms available upon request.

Total THC = THCa \* 0.877 + d9-THC

Total CBD = CBDa \* 0.877 + CBD

LOQ = Limit of Quantitation; NR = Not Reported; ND = Not Detected. Unless otherwise stated all quality control samples performed within specifications established by the Laboratory.



7650 E. Evans Road  
Scottsdale, AZ  
(480) 219-6460  
http://www.c4lab.com  
Lic#

Dennis Wells  
CSO/QAM



Scan for  
References

Confident Cannabis  
All Rights Reserved  
support@confidentcannabis.com  
(866) 506-5866  
www.confidentcannabis.com



This product has been tested by C4 Laboratories LLC using valid testing methodologies and a quality system as required by state law. Values reported relate only to the product tested. C4 Laboratories LLC makes no claims as to the efficacy, safety or other risks associated with any detected or non-detected levels of any compounds reported herein. This Certificate shall not be reproduced except in full, without the written approval of C4 Laboratories LLC.



# Certificate of Analysis

Powered by Confident Cannabis  
3 of 4

**FINAL**

## Venom Extracts

9014 N 23rd Ave Suite 10  
Phoenix, AZ 85021  
jcohen089@gmail.com  
(602) 405-6446  
Lic. #0259910DARS639141001

Sample: 2006C4L0070.5397

Strain: Hazelnut Cream

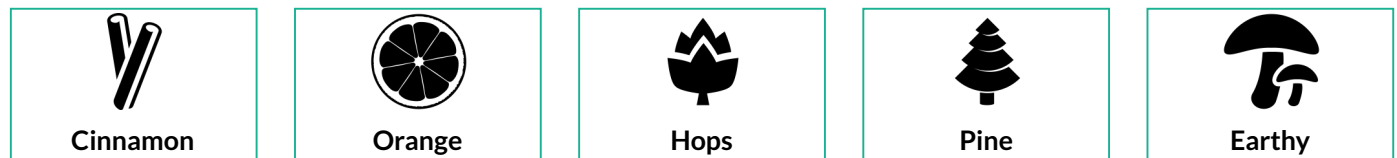
Lot#: ; Batch#: ; Batch Size: - grams  
Sample Received: 06/12/2020; Report Created: 06/17/2020; Expires: 06/17/2021

## Hazelnut Cream Shatter

Concentrates & Extracts, Shatter, Butane



## Terpenes



Analyte	LOQ	Mass	Mass	
	%	%	mg/g	
β-Caryophyllene	0.089	0.978	9.78	
δ-Limonene	0.089	0.670	6.70	
β-Myrcene	0.089	0.659	6.59	
β-Pinene	0.089	0.284	2.84	
Ocimene	0.089	0.231	2.31	
(-)-Isopulegol	0.089	0.167	1.67	
α-Pinene	0.089	0.158	1.58	
α-Humulene	0.089	0.134	1.34	
Nerolidol	0.089	0.127	1.27	
p-Cymene	0.089	0.121	1.21	
Linalool	0.089	0.109	1.09	
γ-Terpinene	0.089	0.108	1.08	
α-Terpinene	0.089	0.104	1.04	
Terpinolene	0.089	0.090	0.90	
Camphene	0.089	<LOQ	<LOQ	
Caryophyllene Oxide	0.089	ND	ND	
δ-3-Carene	0.089	<LOQ	<LOQ	
Eucalyptol	0.089	ND	ND	
Geraniol	0.089	ND	ND	
Guaiol	0.089	ND	ND	
(-)-α-Bisabolol	0.089	ND	ND	

**3.940%**  
Total Terpenes

Notes: Chromatograms available upon request.  
LOQ = Limit of Quantitation; NR = Not Reported; ND = Not Detected. Unless otherwise stated all quality control samples performed within specifications established by the Laboratory.



7650 E. Evans Road  
Scottsdale, AZ  
(480) 219-6460  
http://www.c4lab.com  
Lic#

Dennis Wells  
CSO/QAM



Scan for  
References

Confident Cannabis  
All Rights Reserved  
support@confidentcannabis.com  
(866) 506-5866  
www.confidentcannabis.com



This product has been tested by C4 Laboratories LLC using valid testing methodologies and a quality system as required by state law. Values reported relate only to the product tested. C4 Laboratories LLC makes no claims as to the efficacy, safety or other risks associated with any detected or non-detected levels of any compounds reported herein. This Certificate shall not be reproduced except in full, without the written approval of C4 Laboratories LLC.



# Certificate of Analysis

Powered by Confident Cannabis  
4 of 4

**FINAL**

## Venom Extracts

9014 N 23rd Ave Suite 10  
Phoenix, AZ 85021  
jcohen089@gmail.com  
(602) 405-6446  
Lic. #0259910DARS639141001

Sample: 2006C4L0070.5397

Strain: Hazelnut Cream

Lot#: ; Batch#: ; Batch Size: - grams  
Sample Received: 06/12/2020; Report Created: 06/17/2020; Expires: 06/17/2021

## Hazelnut Cream Shatter

Concentrates & Extracts, Shatter, Butane



## Residual Solvents

Analyte	LOQ	Limit	Mass	Status
	PPM	PPM	PPM	
Acetone	14		41	Tested
Acetonitrile	14		ND	Tested
Benzene	14		ND	Tested
Carbon-Tetrachloride	14		ND	Tested
Chloroform	14		ND	Tested
Ethanol	14		ND	Tested
Heptane	14		ND	Tested
Hexanes	14		<LOQ	Tested
Isobutane	14		ND	Tested
Isopropanol	14		19	Tested
Methanol	14		ND	Tested
n-Butane	14		204	Tested
o-Xylene	14		ND	Tested
Pentane	14		ND	Tested
Tetrahydrofuran	14		<LOQ	Tested
Toluene	14		ND	Tested
Xylenes	14		ND	Tested



Notes: Chromatograms available upon request.

LOQ = Limit of Quantitation (1 ppm); ND = Not Detected; Unless otherwise stated all quality control samples performed within specifications established by the Laboratory.



7650 E. Evans Road  
Scottsdale, AZ  
(480) 219-6460  
<http://www.c4lab.com>  
Lic#

Dennis Wells  
CSO/QAM



Scan for  
References

Confident Cannabis  
All Rights Reserved  
[support@confidentcannabis.com](mailto:support@confidentcannabis.com)  
(866) 506-5866  
[www.confidentcannabis.com](http://www.confidentcannabis.com)



This product has been tested by C4 Laboratories LLC using valid testing methodologies and a quality system as required by state law. Values reported relate only to the product tested. C4 Laboratories LLC makes no claims as to the efficacy, safety or other risks associated with any detected or non-detected levels of any compounds reported herein. This Certificate shall not be reproduced except in full, without the written approval of C4 Laboratories LLC.