



# Certificate of Analysis

Powered by Confident Cannabis  
1 of 8

## Venom Extracts

Phoenix, AZ 85022  
jcohen089@gmail.com  
(602) 405-6446  
Lic. #0259910DARS639141001

Sample: 1903C4L0021.2357

Strain: 24K  
Lot#: ; Batch#: ; Batch Size: - grams  
Sample Received: 03/05/2019; Report Created: 03/07/2019; Expires: 03/07/2020

## 24K Shatter

Concentrates & Extracts, Shatter, Butane



Dear Valued Colleague,

Thank you for selecting C4 Laboratories. Our goal at C4 is to provide reliable data that is interpreted within the appropriate physiological context, to ultimately empower patients to use cannabis medicine more effectively. The data within this report are the result of various analytical methods that have been developed by the team of scientists at C4 Laboratories. For the characterization and quantification of 21 terpene compounds and residual solvents we use Head-Space Gas Chromatography with Flame Ionization Detection (HS-GC-FID). Additionally, Ultra High Performance Liquid Chromatography (UHPLC) is used for the characterization and quantification of the 10 major phytocannabinoids found in cannabis. All data are collected in concert with proper quality assurance/quality control measures (QA/QC), including the use of intermittent analytical blanks, sample spikes, and commercial standards.

As an additional measure of quality control, we provide a historical reference (when available) to analytical results from an equivalent strain of cannabis/cannabis product to draw comparison. We understand that within an individual strain that results may vary as a result of variances in sample homogeneity, analytical methodology, crop conditions, genetic drift, and/or gene flow during hybridization. However, such a comparison can provide valuable insight into sample integrity and/or the phenotypic identity of the analyzed sample.

Additionally, we have interpreted all data within the physiological context provided to us by the growing body of peer-reviewed scientific research studies. Key factors to consider when determining how to most appropriately use a particular strain of cannabis include, but are not limited to, an evaluation of the possible cannabinoid/terpene synergies and an analysis of the various cannabinoid ratios, particular the CBD-A/THC-A, CBD/THC and CBG/CBN ratios. Using the scientific interpretations provided within this report, consult a physician prior to adopting a medical cannabis regiment for the treatment of specific medical conditions.

It is important to note that when analyzing cannabis there can exist natural variability of cannabinoid and terpene concentrations within individual plants. Cannabinoid concentrations in cannabis flower have been found to increase distally with respect to the root mass. As such, the analysis of multiple samples from any plant of interest is recommended.

Thank you again for your confidence in C4 Laboratories. We strive to be an authority on cannabis education, targeted therapies and patient protection. Also, as a research laboratory, we hope to discover novel cannabis constituents through our efforts with academic research programs in the C4 Cannabinomics Collaborative. For more information about how you can collaborate with our research team please visit our website at [www.c4lab.com](http://www.c4lab.com).



1930 S. Alma School Rd.  
Mesa, AZ  
(480) 219-6460  
<http://www.c4lab.com>  
Lic#

Aaron Hicks  
Director of Laboratory Operations



Scan for  
References

Confident Cannabis  
All Rights Reserved  
[support@confidentcannabis.com](mailto:support@confidentcannabis.com)  
(866) 506-5866  
[www.confidentcannabis.com](http://www.confidentcannabis.com)





# Certificate of Analysis

Powered by Confident Cannabis  
2 of 8

## Venom Extracts

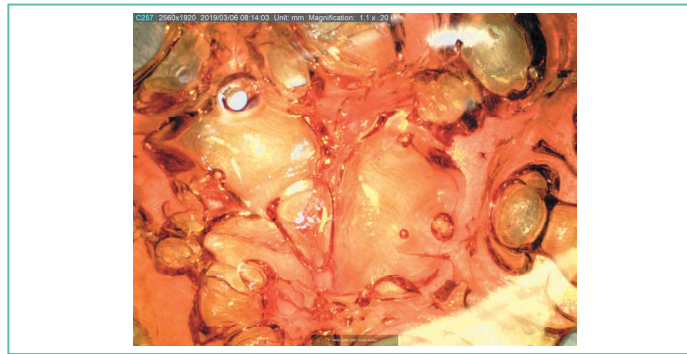
Sample: 1903C4L0021.2357

Phoenix, AZ 85022  
jcohen089@gmail.com  
(602) 405-6446  
Lic. #0259910DARS639141001

Strain: 24K  
Lot#: ; Batch#: ; Batch Size: - grams  
Sample Received: 03/05/2019; Report Created: 03/07/2019; Expires: 03/07/2020

## 24K Shatter

Concentrates & Extracts, Shatter, Butane



## Cannabinoids

## Safety

75.471%

Total THC

<LOQ

Total CBD

Not Tested

Microbials

Pass

Foreign Matter

Pass

Solvents

## Terpenes



Hops  
 $\beta$ -Myrcene



Pine  
 $\alpha$ -Pinene



Herbal  
p-Cymene



Cinnamon  
 $\beta$ -Caryophyllene



Lavender  
Linalool



1930 S. Alma School Rd.  
Mesa, AZ  
(480) 219-6460  
<http://www.c4lab.com>  
Lic#

Aaron Hicks  
Director of Laboratory Operations



Scan for  
References

Confident Cannabis  
All Rights Reserved  
[support@confidentcannabis.com](mailto:support@confidentcannabis.com)  
(866) 506-5866  
[www.confidentcannabis.com](http://www.confidentcannabis.com)



This product has been tested by C4 Laboratories LLC using valid testing methodologies and a quality system as required by state law. Values reported relate only to the product tested. C4 Laboratories LLC makes no claims as to the efficacy, safety or other risks associated with any detected or non-detected levels of any compounds reported herein. This Certificate shall not be reproduced except in full, without the written approval of C4 Laboratories LLC.



# Certificate of Analysis

Powered by Confident Cannabis  
3 of 8

## Venom Extracts

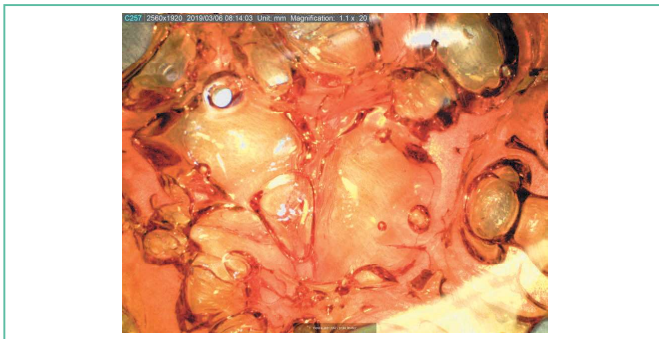
Phoenix, AZ 85022  
jcohen089@gmail.com  
(602) 405-6446  
Lic. #0259910DARS639141001

Sample: 1903C4L0021.2357

Strain: 24K  
Lot#: ; Batch#: ; Batch Size: - grams  
Sample Received: 03/05/2019; Report Created: 03/07/2019; Expires: 03/07/2020

## 24K Shatter

Concentrates & Extracts, Shatter, Butane



**75.471%**  
Total THC

**<LOQ**  
Total CBD

**1** : **0**  
THC : CBD

## Cannabinoids

**Pass**  
Foreign Matter

Analyte	LOQ %	Mass %	Mass mg/g	Std. Dev.
THCa	0.010	83.682	836.82	<div style="width: 100%; height: 10px; background-color: green;"></div>
Δ9-THC	0.010	2.082	20.82	<div style="width: 5%; height: 10px; background-color: green;"></div>
CBD	0.010	ND	ND	
CBDa	0.010	ND	ND	
CBC	0.010	ND	ND	
CBG	0.010	ND	ND	
CBN	0.010	ND	ND	
THCV	0.010	ND	ND	
Δ8-THC	0.010	ND	ND	
CBDV	0.010	ND	ND	
<b>Total</b>		<b>85.764</b>	<b>857.64</b>	

Total THC = THCa \* 0.877 + d9-THC  
Total CBD = CBDa \* 0.877 + CBD  
LOQ = Limit of Quantitation; NR = Not Reported; Unless otherwise stated all quality control samples performed within specifications established by the Laboratory.



1930 S. Alma School Rd.  
Mesa, AZ  
(480) 219-6460  
http://www.c4lab.com  
Lic#

Aaron Hicks  
Director of Laboratory Operations



Scan for  
References

Confident Cannabis  
All Rights Reserved  
support@confidentcannabis.com  
(866) 506-5866  
www.confidentcannabis.com



This product has been tested by C4 Laboratories LLC using valid testing methodologies and a quality system as required by state law. Values reported relate only to the product tested. C4 Laboratories LLC makes no claims as to the efficacy, safety or other risks associated with any detected or non-detected levels of any compounds reported herein. This Certificate shall not be reproduced except in full, without the written approval of C4 Laboratories LLC.



# Certificate of Analysis

Powered by Confident Cannabis  
4 of 8

## Venom Extracts

Sample: 1903C4L0021.2357

Phoenix, AZ 85022  
jcohen089@gmail.com  
(602) 405-6446  
Lic. #0259910DARS639141001

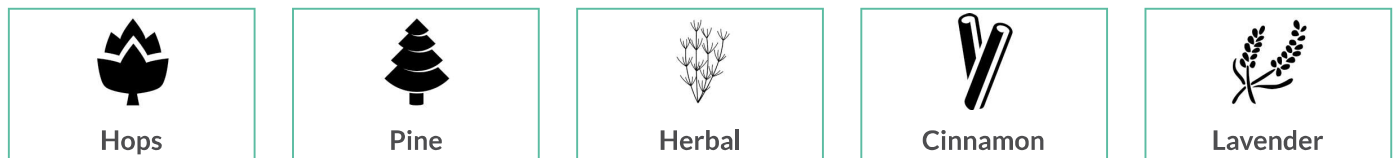
Strain: 24K  
Lot#: ; Batch#: ; Batch Size: - grams  
Sample Received: 03/05/2019; Report Created: 03/07/2019; Expires: 03/07/2020

## 24K Shatter

Concentrates & Extracts, Shatter, Butane



## Terpenes



Analyte	LOQ	Mass	Mass	
	%	%	mg/g	
β-Myrcene	0.001	0.311	3.11	
α-Pinene	0.001	0.169	1.69	
p-Cymene	0.001	0.169	1.69	
β-Caryophyllene	0.001	0.144	1.44	
β-Pinene	0.001	0.079	0.79	
α-Humulene	0.001	0.046	0.46	
Linalool	0.001	0.036	0.36	
Camphene	0.001	0.018	0.18	
Terpinolene	0.001	0.015	0.15	
Ocimene	0.001	0.012	0.12	
Nerolidol	0.001	0.004	0.04	
γ-Terpinene	0.001	0.002	0.02	
α-Terpinene	0.001	<LOQ	<LOQ	
Caryophyllene Oxide	0.001	ND	ND	
δ-3-Carene	0.001	ND	ND	
δ-Limonene	0.001	ND	ND	
Eucalyptol	0.001	ND	ND	
Geraniol	0.001	ND	ND	
Guaio	0.001	ND	ND	
(-)-α-Bisabolol	0.001	ND	ND	
(-)-Isopulegol	0.001	ND	ND	

**1.005%**  
Total Terpenes

LOQ = Limit of Quantitation; NR = Not Reported; Unless otherwise stated all quality control samples performed within specifications established by the Laboratory.



1930 S. Alma School Rd.  
Mesa, AZ  
(480) 219-6460  
<http://www.c4lab.com>  
Lic#

Aaron Hicks  
Director of Laboratory Operations



Confident Cannabis  
All Rights Reserved  
support@confidentcannabis.com  
(866) 506-5866  
[www.confidentcannabis.com](http://www.confidentcannabis.com)



This product has been tested by C4 Laboratories LLC using valid testing methodologies and a quality system as required by state law. Values reported relate only to the product tested. C4 Laboratories LLC makes no claims as to the efficacy, safety or other risks associated with any detected or non-detected levels of any compounds reported herein. This Certificate shall not be reproduced except in full, without the written approval of C4 Laboratories LLC.



# Certificate of Analysis

Powered by Confident Cannabis  
8 of 8

## Venom Extracts

Phoenix, AZ 85022  
jcohen089@gmail.com  
(602) 405-6446  
Lic. #0259910DARS639141001

Sample: 1903C4L0021.2357

Strain: 24K  
Lot#: ; Batch#: ; Batch Size: - grams  
Sample Received: 03/05/2019; Report Created: 03/07/2019; Expires: 03/07/2020

## 24K Shatter

Concentrates & Extracts, Shatter, Butane



3/7/2019 9:42:36 AM Page 1 / 1



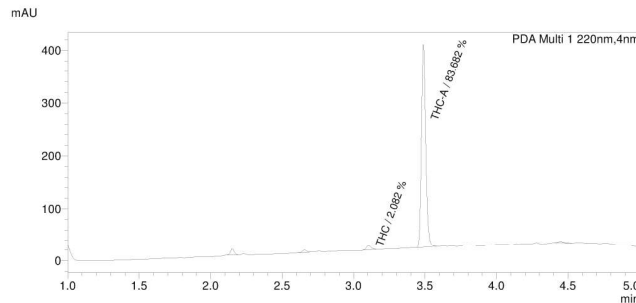
C4 Laboratories, LLC  
1930 S. Alma School Rd  
Suite D206  
Mesa, AZ 85210  
www.c4lab.com

"Patient protection through true science"

### C4 Laboratories, LLC

Sample Name	: 1903C4L0021.2357_24K_Shatter	Sample Type	: Concentrate
Sample ID	: Venom Extracts	Acquired by	: Aaron J. Hicks
Data Filename	: 1903C4L0021.2357_24K_Shatter_011.lcd	Processed by	: Aaron J. Hicks
Method Filename	: 10_cannabinoids_1_Jan_2019.lcm		
Batch Filename	: Batch v5.lcb		
Vial #	: 1-26		
Injection Volume	: 5 uL		
Date Acquired	: 3/6/2019 3:11:08 PM		
Date Processed	: 3/6/2019 3:18:09 PM		

### Cannabinoids by HPLC



### Cannabinoids

Ret. Time	Area	Conc.	Name
--	--	--	-- CBD-V
--	--	--	-- CBD-A
--	--	--	-- CBG
--	--	--	-- CBD
--	--	--	-- THC-V
--	--	--	-- CBN
3.105	19911	2.082%	THC
--	--	--	-- db-THC
3.489	810031	83.682%	THC-A

C:\LabSolutions\Data\6 Mar 2019\1903C4L0021.2357\_24K\_Shatter\_011.lcd



1930 S. Alma School Rd.  
Mesa, AZ  
(480) 219-6460  
http://www.c4lab.com  
Lic#

Aaron Hicks  
Director of Laboratory Operations



Scan for  
References

Confident Cannabis  
All Rights Reserved  
support@confidentcannabis.com  
(866) 506-5866  
www.confidentcannabis.com



This product has been tested by C4 Laboratories LLC using valid testing methodologies and a quality system as required by state law. Values reported relate only to the product tested. C4 Laboratories LLC makes no claims as to the efficacy, safety or other risks associated with any detected or non-detected levels of any compounds reported herein. This Certificate shall not be reproduced except in full, without the written approval of C4 Laboratories LLC.